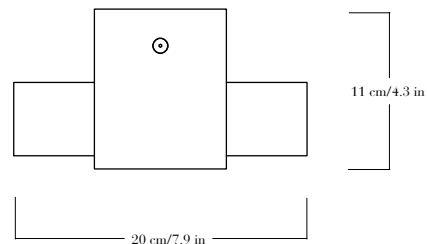
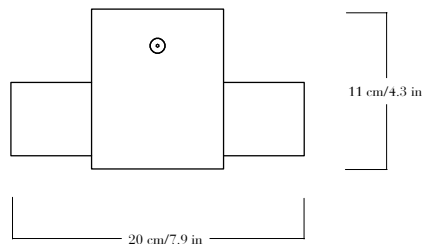
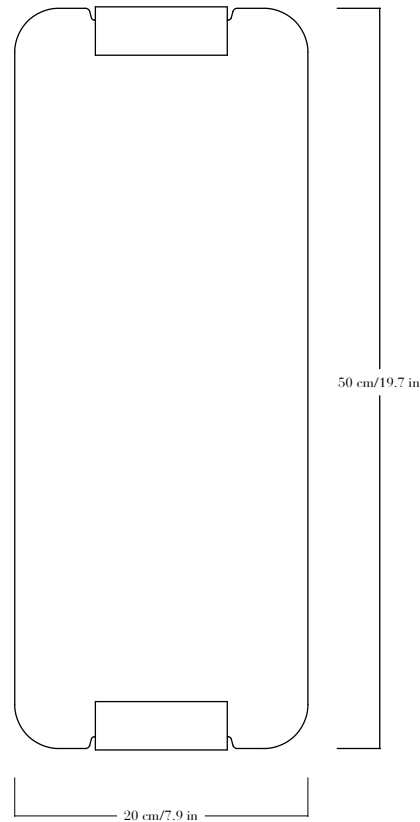
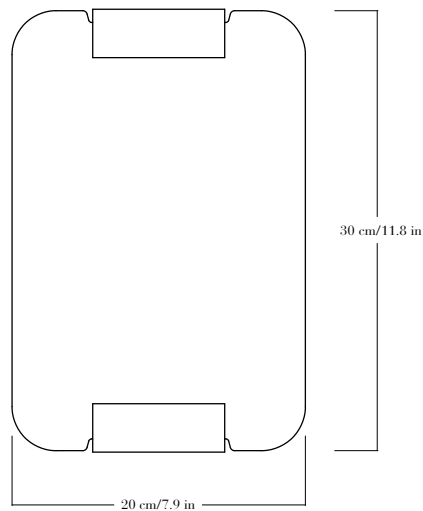




Applique en verre fondu à cire perdue, structure en aluminium patiné.
Pièces numérotées et signées.

—
*Sconce in lost-wax cast glass, structure in patinated aluminium.
Each piece is numbered and signed.*

**FINITIONS**

Verre : verre transparent, gris, jaune paille (SY), orange (O), champagne (C), ambre (AM), gris brun (BG), bleu clair (LB) ou vert clair (LG).
Structure : aluminium patiné noir, canon de fusil ou chromé.

DIMENSIONS

Petit : hauteur 30 cm, largeur 20 cm, profondeur 11 cm.
Grand : hauteur 50 cm, largeur 20 cm, profondeur 11 cm.

POIDS

7 kg–11 kg

SOURCE

Strip LED, température de couleur 2700 K, IRC > 90.
Versions IP20, IP44 ou IP65 disponibles sur demande.

FINISHES

Glass: transparent, grey, straw yellow (SY), orange (O), champagne (C), amber (AM), brown grey (BG), light blue (LB) or light green (LG).
Structure: black patinated, gunmetal or chromed aluminium.

DIMENSIONS

Small: height 30 cm/11.8 in, width 20 cm/7.9 in, depth 11 cm/4.3 in.
Large: height 50 cm/19.7 in, width 20 cm/7.9 in, depth 11 cm/4.3 in.

WEIGHT

15.4 lbs–24.3 lbs

LAMPING

LED strip, color temperature 2700 K, CRI > 90.
IP20, IP44, or IP65 versions available on request.